



CO-OPERATIVE BANK
We are you



Goodhome Mortgage

Property Listing

January 2024



Residential Properties



CO-OPERATIVE BANK
We are you

GOODHOME MORTGAGE PROPERTY LISTING

APARTMENTS AT SABAKI [P002]



LOCATION:

Sabaki, approximately 4.5Km off Mombasa Road from the Total Junction

DESCRIPTION:

Bedsitters, studio, 1 & 2 bedroom apartments

AMENITIES:

- Children Playing Area
- Ample Parking
- Guard House
- Borehole

STATUS OF THE PROJECT:

Ready for occupation

PRICE

TYPE	PLINTH AREA	PRICE	INDICATIVE RENT
Bedsitters	16 sqm	Ksh 1,155,000.00	Ksh 3,500.00
Studios	20 sqm	Ksh 1,760,000.00	Ksh 4,000.00
1 Bedroom	30 sqm	Ksh 2,530,000.00	Ksh 7,000.00
2 Bedroom	40 sqm	Ksh 3,190,000.00	Ksh 10,000.00

LOCATION:

Syokimau, approximately 800 metres off Mombasa Road before the Molongo Weighbridge

DESCRIPTION:

2 and 3 bedroom apartments with master ensuite

AMENITIES:

- Open Plan Kitchen
- Alarm System
- Children's Play Area
- Laundry Area
- Perimeter Fencing
- Controlled Access
- Ample Parking

STATUS OF THE PROJECT:

Ready for occupation

PRICE

TYPE	PLINTH AREA	PRICE	INDICATIVE RENT
2 Bedroom	74 sqm	Ksh 6,950,000.00	Ksh 22,000.00
3 Bedroom	96 sqm	Ksh 8,800,000.00	Ksh 25,000.00
Maisonettes	3Br	Ksh 9,000,000.00	

APARTMENTS IN SYOKIMAU [P003]



APARTMENTS IN RACECOURSE AREA [P004]



LOCATION:

Racecourse Area, approximately 400 metres off Ngong Road

DESCRIPTION:

Studios, 1 and 2 bedroom apartments

AMENITIES:

- Rooftop Garden
- Commercial Area
- Nursery School
- Swimming Pool
- Large Central Garden
- Borehole
- Play Area
- Ample Parking

STATUS OF THE PROJECT:

Ready for occupation

PRICE

TYPE	PLINTH AREA	PRICE	INDICATIVE RENT
Studios	25 sqm	Ksh 3,500,000.00	Ksh 20,000.00
Standard 1 Bedroom	37 sqm	Ksh 4,600,000.00	Ksh 30,000.00
Deluxe 1 Bedroom	40 sqm	Ksh 4,800,000.00	Ksh 30,000.00
2 Bedroom	72 sqm	Ksh 7,800,000.00	Ksh 40,000.00
Airbnb rates		Ksh 2,500 - Ksh 5,000	

APARTMENTS IN RUAKA [PO06]



LOCATION:

Ruaka, approximately 200 metres off Limuru Road on Mbanya Drive

DESCRIPTION:

2 and 3 bedroom apartments (Master Ensuite)

AMENITIES:

- Cabro-paved Driveways
- Green Areas
- Spacious Balconies
- Swimming Pool
- Ample Parking
- CCTV
- Gym
- Electric Fence

STATUS OF THE PROJECT:

Ready for occupation

PRICE

TYPE	PLINTH AREA	PRICE	INDICATIVE RENT
2 Bedroom	82 sqm	Ksh 6,600,000.00	Ksh 35,000.00
3 Bedroom	104 sqm	Ksh 8,600,000.00	Ksh 45,000.00

LOCATION:

Mowlem area, 600 M off Kangundo Road

DESCRIPTION:

1, 2 and 3 bedroom apartments

AMENITIES:

- Ample Parking
- Commercial Centre
- Sentry Unit (Guard Station)
- Kindergarten
- Gym
- Perimeter Fencing
- DSTV
- Swimming Pool

STATUS OF THE PROJECT:

Ready for occupation

PRICE

TYPE	OLD PRICE	PROMOTIONAL PRICE	RENTAL RETURN
1 Bedroom	Ksh 4,500,000.00	Ksh 3,800,000.00	Ksh 17,500.00
2 Bedroom	Ksh 6,000,000.00	Ksh 5,000,000.00	Ksh 27,500.00
3 Bedroom	Ksh 7,500,000.00	Ksh 6,000,000.00	Ksh 32,500.00

APARTMENTS IN MOWLEM AREA [P010]



MAISONETTE IN LANG'ATA [P011]



LOCATION:

Southlands Estate in Langata, Nairobi County

DESCRIPTION:

3 Bedroom semi-detached Maisonette with a domestic servant quarter

AMENITIES:

- Elevated Water Tank
- Spacious Dining Area
- Cabro Paved Compound
- Dining Area
- Connection to Electricity, Sewer Services and Water Mains
- Car Port

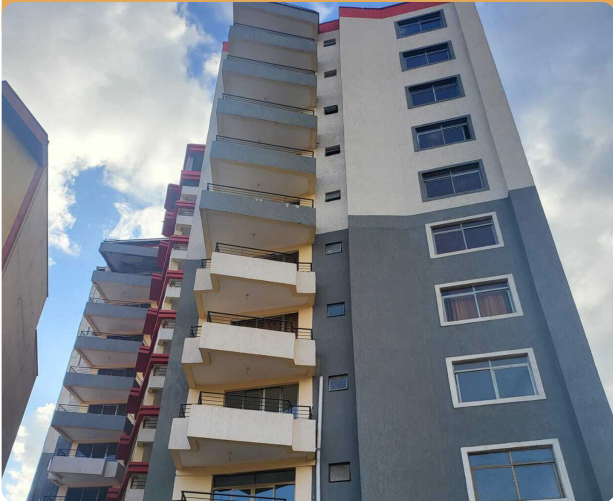
STATUS OF THE PROJECT:

Ready for occupation

PRICE

Ksh 17,000,000.00

APARTMENTS IN PARKLANDS [P012]



LOCATION:

Parklands, near The National Museums of Kenya

DESCRIPTION:

Luxurious apartments in Parklands

AMENITIES:

- Ample Parking
- American Kitchen
- High Speed Lifts
- Spacious Lounge
- Spacious Dining Area
- Pantry

STATUS OF THE PROJECT:

Under construction

PRICE

TYPE	PRICE
2 Bedroom	Ksh 12,500,000.00
3 Bedroom	Ksh 13,000,000.00

LOCATION:

Ngong Town, near the Co-operative Bank Branch, 400m off Ngong Road on Oloolua Road

DESCRIPTION:

2 and 3 bedroom (Master Ensuite) apartments (30 units in total)

AMENITIES:

- Lounge Dining Room
- Perimeter Fencing
- Fitted Kitchen
- Adequate Water Storage
- 1 Parking Slot Per Apartment

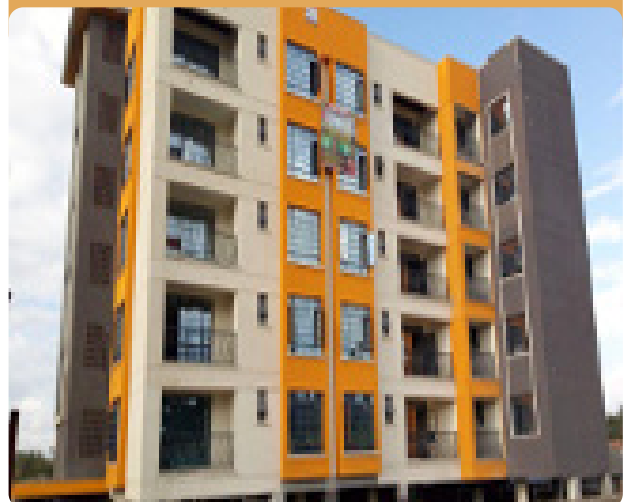
STATUS OF THE PROJECT:

Ready for occupation

PRICE

TYPE	PLINTH AREA	PRICE	RENTAL RETURN
2 Bedroom	86 sqm	Ksh 5,500,000.00	Ksh 27,000
3 Bedroom	103 sqm	Ksh 6,500,000.00	Ksh 32,000

APARTMENTS IN NGONG TOWN [P019]



ONE APARTMENT UNIT IN NYALI [P025]



LOCATION:

Nyali, approximately 600M off Links Road

DESCRIPTION:

3 bedroom (Master Ensuite) apartment on first floor

AMENITIES:

- Borehole On Site
- Lounge Area
- Laundry Area
- Controlled Access
- Activated Rooftop (Terrace)
- Ample Parking
- Detached Servants Quarter

STATUS OF THE PROJECT:

Ready for occupation

PRICE

Ksh 13,000,000.00

LOCATION:

Hardy Area, Karen

DESCRIPTION:

Double storey, 4 bedroom (all en-suite) town house, measuring 520 sqm, developed on half an acre

AMENITIES:

- Ensuite Domestic Servants' Quarters
- Landscaped Gardens
- Store Block
- Gate House
- Connection To Electricity And Water Mains
- Gazebo

STATUS OF THE PROJECT:

Ready for occupation

PRICE

Accepting Offers

MANSION IN HARDY, KAREN [P030]



BLOCK OF APARTMENTS, ELDORET [P033]

LOCATION:

Located 200meters off Eldoret - Malaba Highway.

DESCRIPTION:

Newly constructed four storey building comprised of 1 bedroom (1 unit) and 2 bedrooms (15 units) apartments (Master Ensuite).

AMENITIES:

- Kitchen Cabinets
- Murram Access Road
- Close Proximity To Eldoret Town

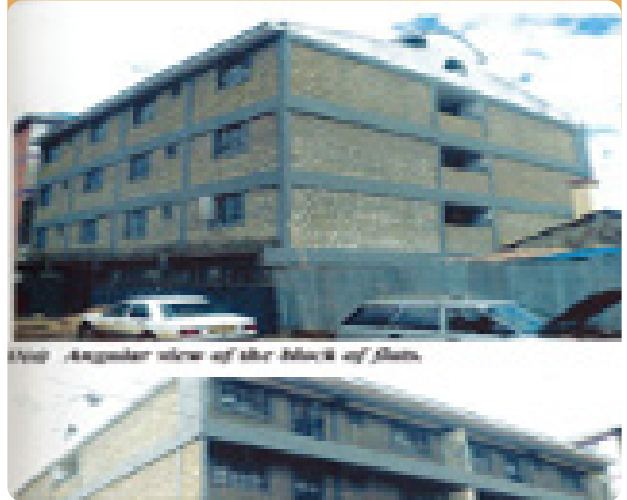
STATUS OF THE PROJECT:

Ready for occupation

PRICE

Ksh 50,000,000.00

Expected monthly rental income - Ksh 132,000.00



MAISONETTE ON MOMBASA ROAD [P039]



LOCATION:

Along Mombasa Road at Sabaki

DESCRIPTION:

4 bedroom (Master Ensuite) maisonette with a DSQ

AMENITIES:

- Separate Dining Area
- Kitchen with Pantry
- Laundry Area
- Cloakroom
- 3 Bathrooms
- Parking Spaces for 2 Cars
- Children's Play Area
- Water Storage Tank
- 24/7 Security

STATUS OF THE PROJECT:

Ready for occupation

PRICE

TYPE	PLINTH AREA	PRICE	INDICATIVE RENT
4 Bedroom	160 sqm	Ksh 16,000,000.00	Ksh 50,000.00

**HOTEL APARTMENTS IN MTWAPA,
KILIFI COUNTY [P048]**



LOCATION:

Mtwapa next to club Tropicana about 100 meters off Malindi Mombasa Road with an exit directly opposite National Bank of Kenya premises

DESCRIPTION:

Hotel complex ready for daily bookings

AMENITIES:

- Borehole on Site
- Spacious Rooms
- Laundry Area
- Lounge Area
- Controlled Access
- Ample Parking
- Activated Rooftop (Terrace)
- Domestic Servant Quarters

STATUS OF THE PROJECT:

Ready for Occupation

PRICE

Accepting Offers

BUNGALOW IN MLOLONGO [P049]



LOCATION:

Along Mombasa Road – At Mlolongo, off Katani Road

DESCRIPTION:

3 Bedroom Bungalow (Master En-suite)

AMENITIES:

- Individual Title Deed
- 2 Private Parking Slots
- Kitchen Fitted With Cabinets
- Estate Boundary With Electric Fence
- Laundry Area
- Borehole

STATUS OF THE PROJECT:

Ready for occupation

PRICE

Ksh 7,500,000.00 (Negotiable)

LOCATION:

Kisii County, Nyanchwa

DESCRIPTION:

5 storage block of flats comprising of 1 shop, 5 units of 1 bedroom flats & 9 units of 2 bedroom flats on 0.0711 of an acre

AMENITIES:

- Mains for Electricity & Water Connected to The Property
- Drainage to Septic Tank/Sewer Line
- Area Is Covered By Cellular Mobile Networks
- Floors are Finished in Ceramic Tiles
- Close Proximity to Kisii Town

STATUS OF THE PROJECT:

Ready for occupation

PRICE

PRICE	INDICATIVE RENT
Ksh 19,000,000.00	Ksh 180,000.00

**A BLOCK OF APARTMENTS IN
NYANCHWA AREA KISII [P050]**



GATED COMMUNITY IN KISAJU [P052]



LOCATION:

Kisaju, off Namanga Road

DESCRIPTION:

A modern estate sitting on 32 Acres comprising of 1, 2 & 3 Bedroom apartments and Townhouses with & without DSQ to complement your contemporary lifestyle in a tranquil environment away from the flurry of the city

AMENITIES:

- Children Play Ground
- Electric Fence
- Cabro Paved Driveways
- Jogging Track
- Two Boreholes
- Retail and Commercial Center
- Ample Parking
- Solar Water Heater

PRICES FOR APARTMENTS

UNIT	PRICE
1 Bedroom	Ksh 1,906,000.00
2 Bedroom	Ksh 3,200,000.00
3 Bedroom	Ksh 3,800,000.00

PRICES FOR TOWNHOUSES

DESCRIPTION	PRICE
3 Bedroom without DSQ	Ksh 5,800,000.00
3 Bedroom with DSQ	Ksh 6,200,000.00

LOCATION:

Kitisuru, off Lower Kabete

DESCRIPTION:

3 Bedroom Apartments (Master Ensuite)

AMENITIES:

- Ample Parking
- Borehole
- Lifts
- Cabro Paved Compound
- Perimeter Wall with Electric Fence

STATUS OF THE PROJECT:

Ready for occupation

PRICE

TYPE	PLINTH AREA	PRICE
3 bedrooms + DSQ	123 Sqm	Ksh 10,900,000.00
3 bedroom	112 Sqm	Ksh 9,500,000.00

APARTMENTS IN KITISURU [P053]



APARTMENTS IN RUAKA [P054]



LOCATION:

Ruaka, near Red Hill Road and Total Energies Ruaka

DESCRIPTION:

2 and 3 Bedroom Apartments

AMENITIES:

- Borehole
- Roof Garden
- Ample Parking
- CCTV and Backup Generator for Security
- Solar Water Heating System
- Electric Fence along The Perimeter
- Clothes Drying Yard on Roof
- Children's Play Area
- High Speed Lift

STATUS OF THE PROJECT:

Ready for occupation

PRICE

TYPE	PRICE FROM	Rent
2 bedrooms	Ksh 6,800,000	Ksh 40,000.00
3 bedroom	Ksh7,950,000	Ksh 50,000.00

MAISONETTE IN SYOKIMAU [P055]



LOCATION:

Syokimau, 900m from the tarmac from Mombasa Road

DESCRIPTION:

The house has been converted into single rooms, bedsitters, and a 1 bedroom that are ideal for rental.

STATUS OF THE PROJECT:

Ready for occupation

PRICE

Ksh 30,000,000.00

LOCATION:

Kileleshwa Vihiga Road

DESCRIPTION:

5 bedroom (all en-suite) townhouse with 2 servant quarters occupying approximately an eighth of an acre in a compound of 4 Townhouses

AMENITIES:

- Family Room
- Intercom
- CCTV Surveillance
- Back-up Generator
- Open Plan Kitchen Fitted with Microwave and Oven
- Lush Garden

STATUS OF THE PROJECT:

Ready for occupation

PRICE

Accepting offers

TOWNHOUSE IN KILELESHWA (P063)



LOCATION:

The property is located in Shanzu, 1.5 km from Whitesands Beach Hotel and 100 meters off Mombasa Malindi Highway.

DESCRIPTION:

Units include; Studios, 1 bedroom and 2 bedroom apartments with a realizable rental income of Ksh.550,000.

AMENITIES:

- Swimming Pool
- Power
- Car Park
- Water & Water Tanks
- Perimeter Wall with Electric Fence

STATUS OF THE PROJECT:

Ready for occupation

PRICE

Current rent

Accepting Offers

Ksh 550,000



APARTMENT IN LAVINGTON AREA [P065]



LOCATION:

Situated on the 7th floor of the Pearl Residence on Oloitoktok Road, opposite the Methodist Resort and Conference Centre

DESCRIPTION:

This is a 3 bedroom (all en-suite), fully furnished apartment with a servant's room measuring 241 sqm (2,600 sqft)

AMENITIES:

- Kitchen with Balcony and Pantry
- Laundry Area
- Contemporary Furniture Designs
- Quality Tile Flooring
- Gypsum Textured Ceiling
- Separate Servant's Quarter access
- Heated Swimming Pool
- Mini Theatre
- Borehole on site
- High Speed Lifts
- Banquet Hall and Common Kitchen
- 2 parking Plots per House
- Separate Elevator from Basement to 1st Floor Level for Security purposes.
- Fitted Standard Equipment - TV, Music System, Washing Machine
- Vinyl Matte Finished Walls
- High-tech appliances
- Standard Light fittings
- Concealed Plumbing
- Wallpaper Finishing
- Fully Equipped Gym and Spa
- Water play zone for children
- Security with CCTV Cameras
- Security Access control into property
- Car registration Reader Barrier
- Centralized Property Management
- Back-up Generator for all Houses

STATUS OF THE PROJECT:

Ready for occupation

PRICE

Rental Return

Ksh 26,000,000.00 (Negotiable)

Ksh 140,000.00 (Service charge inclusive)

APARTMENTS IN NGARA WEST AREA [P066]



LOCATION:

Located along Mushebi Road in Ngara West, opposite Stima Investment Co-operative Plaza, with a quick and direct access to the Nairobi Central Business District

DESCRIPTION:

This is an off-plan housing project comprising of studios (18sqm) and 1 bedroom units (32.5 sqm)

AMENITIES:

- Ample Parking
- Borehole & Water Storage
- A mini-commercial centre
- Roof top Terrace
- Backup Generator
- Two High Speed Lifts
- Balcony on all 1 Bedrooms
- Boundary Wall with Electric fence
- CCTV Surveillance
- Refuse Room
- Internet Ready Apartments
- Gym
- Two Fire Escapes

STATUS OF THE PROJECT:

Under construction

PRICE

CASH OPTION

TYPE	Selling Price	Booking Deposit 25%	Within 30 Days 75%
1 Bedroom	Ksh 4,600,000.00	Ksh 1,150,000.00	Ksh 3,450,000.00

MORTGAGE OPTION

TYPE	Selling Price	On or before signing agreement 25%	Balance on Completion
1 Bedroom	Ksh 4,750,000.00	Ksh 1,187,000.00	Ksh 3,563,000.00

INSTALLMENT PAYMENT OPTION

TYPE	Selling Price	25% Booking Deposit	50% During Construction	25% on Completion
1 Bedroom	Ksh 4,850,000.00	Ksh 1,212,500.00	Ksh 2,425,000.00	Ksh 1,212,500.00

LOCATION:

The property is located at Chyulu Road- Mara Road junction in Upperhill, Nairobi.

DESCRIPTION:

Modern high quality 2 and 3 bedroom apartments that are strategically located and ideal for use as furnished and unfurnished residential suites and office spaces. The property also includes a commercial complex with other well-maintained office spaces.

AMENITIES:

- High Speed Lifts
- Borehole Water
- Two Balconies
- Spacious 2 and 3 Bedrooms (all en-suite).
- 24-hour Security
- Controlled Access
- Spacious Living Rooms
- Ample Parking
- Spacious Kitchen with Pantry

STATUS OF THE PROJECT:

Ready for occupation

PRICES

DESCRIPTION	PRICE
2 Bedroom	Ksh 15,600,000.00
3 Bedroom with DSQ	Ksh 17,500,000.00
Commercial Space	Ksh 13,800.00 per square foot

RESIDENTIAL APARTMENTS AND COMMERCIAL SPACE IN UPPER HILL [P067]



APARTMENTS IN LAVINGTON AREA [P068]



LOCATION:

Situated along Argwings Kodhek Road, Lavington in Nairobi.

DESCRIPTION:

Luxurious two-block apartment with 2, 3 bedrooms with dsq & 3-bedroom duplex with dsq

AMENITIES:

- Solar Water Heaters
- Swimming Pool
- Video Intercom
- Rooftop Barbeque
- Rooftop Lounge Deck
- Back-up generators
- Multiple Balconies
- Electric Fence
- High speed lifts
- 24 hour security
- Fitted Gym
- Borehole

STATUS OF THE PROJECT:

The project will be complete and ready for occupation by the end of April 2024

PRICE

TYPE	PLINTH AREA (sqm)	PRICE FROM
2 bedrooms	145.6, 139.8, 138.6 & 113.6	Ksh 16-18Million
3 bedroom +dsq	183.4 & 180.7	Ksh 26,000,000.00
3 bedroom duplex	156.48	Sold Out

Monthly Rental Income	2 bedroom	2 bedroom +dsq	3 bedroom duplex
Unfurnished	Ksh 130,000.00	Ksh 160,000.00	Ksh 180,000.00
Furnished	Ksh 200,000.00	Ksh 250,000.00	Ksh 280,000.00
AirBnb	Ksh 250,000.00	Ksh 300,000.00	Ksh 350,000.00

APARTMENTS IN KILELESHWA [P069]



LOCATION:

Situated along Kikambala Road, Kileleshwa, Nairobi, Kenya

DESCRIPTION:

The property is a luxurious apartment complex with spacious and comfortable 2 bedroom, 1 bedroom, and studio apartment units, complete with fully fitted kitchens.

AMENITIES:

- Solar water heater
- Fully Fitted Gym
- High Speed Lifts
- Borehole
- Rooftop Lounge Deck
- Video Intercom
- 24 hour Security
- Electric Fence
- Rooftop Barbecue
- Multiple Balconies
- Backup Generator

STATUS OF THE PROJECT:

Ready for occupation

PRICE

TYPE	PLINTH AREA (SQ.M)	PRICE FROM
Studio	47.9	Ksh 8,000,000.00
1 bedroom	57.1	Ksh 10,500,000.00
2 bedroom	119.9 & 136.6	Ksh 16-17 Million

Rental Income	Studio	1 bedroom	2 bedroom duplex
Unfurnished (Monthly)	Ksh 60,000.00	Ksh 75,000.00	Ksh 110,000.00
Furnished (Monthly)	Ksh 100,000.00	Ksh 135,000.00	Ksh 175,000.00
AirBnb (Daily rates)	Ksh 5,000.00	Ksh 6,000.00	Ksh 7,000.00

LOCATION:

Situated within a gated-estate off the Eastern Bypass Rd in Kamakis Area, Ruiru, Kiambu County.

DESCRIPTION:

Newly built and well maintained townhouse that is 4 Bedroom (all ensuite) with a dsq.

AMENITIES:

- Cabro Paved Walkway and Parking
- Master Bedroom
- Flat-roof Terrace
- Stone Block Perimeter Wall

STATUS OF THE PROJECT:

Ready for occupation

PRICE

Ksh 16,000,000 - 18,000,000

TOWN HOUSE IN RUIRU [P070]





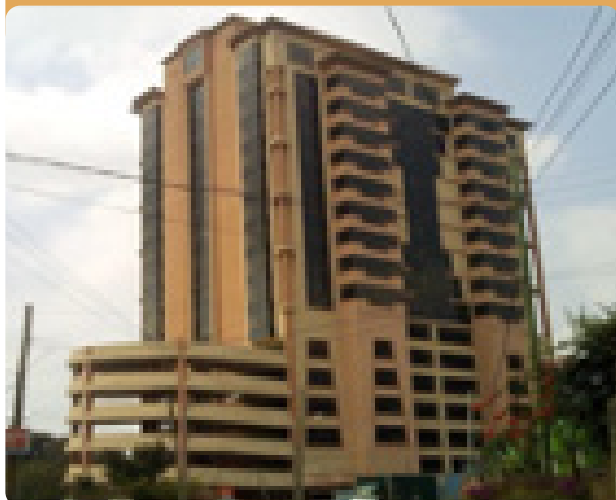
Commercial Properties



CO-OPERATIVE BANK
We are you

GOODHOME MORTGAGE PROPERTY LISTING

OFFICE SPACE IN UPPER HILL [P007]



LOCATION:

Upper Hill Area

DESCRIPTION:

An ultra-modern, state of the art, 18 storey office block set on 1 acre

AMENITIES:

- Conference Facilities
- CCTV Backed Security
- High Speed Lifts
- Access Control
- Banking Hall Access Control
- ICT Structured Cabling
- 164 Parking Bays
- Generator

STATUS OF THE PROJECT:

Ready for occupation

PRICE

Ksh 145,000.00 per sqm and Ksh 1,000,000.00 per parking slot

LOCATION:

Westlands, off Waiyaki Way

DESCRIPTION:

3 office suites, measuring a total of 420 sqm, located in a well-maintained office block.

AMENITIES:

- 6 High Speed Lifts
- Electric Fence
- 6 Parking Bays Including Visitors' Parking
- 24 Hour Security
- Back-up Generator
- Perimeter Fencing
- Borehole On Site
- Reliable Water Supply

STATUS OF THE PROJECT:

Completed and occupied

PRICE

SPACE AVAILABLE	PLINTH AREA	PRICE	INDICATIVE RENT
3 Office Suites on Tower 2	1510 sqft	Ksh 18,000,000.00	Ksh 100.00 per sqft

OFFICE SPACE IN WESTLANDS [P022]



COMMERCIAL BUILDING IN NYERI [P029]



LOCATION:

Nyeri Town in the CBD.

DESCRIPTION:

4 storey commercial building (ground plus four floors) complete with basement parking

AMENITIES:

- Connection to Main Water & Electricity
- Kitchenette And Washrooms For All Floors
- Overhead And Basement Water Storage
- High Speed Lifts

STATUS OF THE PROJECT:

Ready for occupation

PRICE

Accepting Offers

Rent

Ksh 800,000 per month

OFFICE SPACE ON MOMBASA ROAD [P034]



LOCATION:

Mombasa Road next to Nextgen Mall

DESCRIPTION:

4 units office space for sale

AMENITIES:

- Washrooms
- Ample Parking
- Lifts
- CCTV Cameras
- Chute Facilities
- Standby Generator

STATUS OF THE PROJECT:

Ready for occupation

PRICE

Ksh 11,000,000.00 each

Indicative Monthly Rent: Ksh 81,500.00 per month

LOCATION:

NCBD at the junction of Koinange Street and Monrovia Street

DESCRIPTION:

A commercial complex on an eighth of an acre plot comprising of seven levels and two roof extensions with a total build up area of 34,928 square feet

AMENITIES:

- Connection to Electricity, Sewer Services and Water Mains
- Ample Parking
- Two Underground Water Tanks
- Fire Detection And Fire-fighting Equipment

STATUS OF THE PROJECT:

Ready for occupation

PRICE

Accepting Offers

**COMMERCIAL COMPLEX IN
NAIROBI CBD [P062]**





Land & Plots



CO-OPERATIVE BANK

We are you

RESIDENTIAL LAND IN THIKA [PL005]

LOCATION:

Along Gatanga Road

DESCRIPTION:

Blocks of land ranging from 5 acre blocks up to 115-acre blocks

AMENITIES:

- Murram graded internal roads
- Close proximity to Thika-Gatanga Road
- Well Drained Red Soils

PRICE:

Ksh 14,500,000.00 per acre (Negotiable)

PLOT IN RUIRU [PL006]

LOCATION:

Mwalimu Farm area of Ruiru, Kiambu County. Located 1.5 km off the Nothern bypass, deviating west of Joska Shopping Centre.

DESCRIPTION:

Block of 8 acres of land being sold per 1 acre.

AMENITIES:

- Freehold title
- Water and electricity available for immediate connection
- Murram graded Roads
- Proximity to a shopping centre

STATUS OF THE PROJECT:

Ready for immediate development

PRICE:

Ksh 4,000,000.00 per acre

MIXED USE LAND IN NGOLIBA, THIKA [PL010]

LOCATION:

Ngoliba area off Thika Road near Kenchic. Access from the Thika – Garissa Highway is via the Makuyu – Ithanga – Gati-iguru Road (recently tarmacked) approximately 8 km

DESCRIPTION:

Various residential and commercial plots.

AMENITIES:

- Tarmac access from main road
- Murram level driveways
- Proximity to KPLC connection point

PRICE:

Ksh 850,000.00 per eighth of an acre

LAND IN KAJIADO [PL014]

LOCATION:

Kajiado Town near UMMA University approximately 1.5 KM off Namanga Road in Dalalekutuk Area

DESCRIPTION:

200 acres accessible via an all-weather road and on free hold title

PRICE:

Ksh 3,660,000.00 per acre

LAND IN KAJIADO [PL015]

LOCATION:

Kajiado Town near Naisula School approximately 1.7Km off Namanga Road in Dalalekutuk Area

DESCRIPTION:

120 acres accessible via an all-weather road and on free hold title

PRICE:

Ksh 3,900,000.00 per acre

LAND IN ISINYA – KISAJU AREA [PL016]

LOCATION:

Isinya approximately 7 Km from Isinya Township and 800 M off the Isinya – Kiserian Road

DESCRIPTION:

192 acres accessible via an all-weather road and on free hold title

PRICE:

Ksh 3,900,000.00 per acre

RESIDENTIAL PLOTS NEAR TATU CITY [PL017]

LOCATION:

In Kamiti area of Kiambu off the Kiambu – Ruiru Road, adjacent to Tatu City and Mukuyu River

DESCRIPTION:

Quarter acre plots for sale in a gated community

AMENITIES:

- Proximity to water and electricity mains for connection
- Proposed cabro paved drive and walk-ways
- Proposed street lighting
- Proposed common grounds and children’s play areas
- Well drained red soils
- Gatehouse and main trunk roads under construction
- Ready for immediate development

PRICE

From Ksh 8,500,000.00 per quarter

Normal/Gentle – Ksh 8,500,000.00

Elevated – Ksh 8,500,000.00

Near Waterways – Ksh 9,000,000.00

LOTS IN MERISHO, MATASIA [PL022]

LOCATION:

Merisho Area, approximately 3km from Matasia Trading Centre

DESCRIPTION:

Quarter of an acre (100 X 100) residential plots

AMENITIES:

- Touching the recently tarmacked Merisho – Matasia Road
- Proximity to schools, hospitals and other social amenities
- Water and electricity available for connection
- Ready for immediate development with ready free hold titles for each plot

PRICE:

Residential – Ksh 6,000,000.00 quarter acre plot
Commercial – Ksh 6,500,000.00 quarter acre plot

LAND FOR SALE IN MAKUYU, MURANGA COUNTY [PL028]

LOCATION:

Makuyu in Murang'a county

DESCRIPTION:

972 acre parcel of land ideal for subdivision for residential and holiday homes, institutional use or large scale farming or mixed use developments.

AMENITIES:

- Water and electricity within the property ready for connection
- Murram grade roads within the property
- Touching tarmac
- Well drained red soils
- Strategically located dam within the property
- Scenic views of the Mwea Plains

PRICE:

Accepting offers

RESIDENTIAL PLOTS IN KITENGELA [PL026]

LOCATION:

Kitengela, 2 Km off Namanga Road and adjacent to Kampala International University

DESCRIPTION:

Eighth Acre plots for sale

AMENITIES:

- Fence and gate
- Controlled development
- Easy access
- Ready titles

PRICE:

Ksh 1,300,000.00 for eighth of an acre

PARTIALLY DEVELOPED LAND FOR SALE IN NGONG TOWN [PL030]

LOCATION:

Zambia/Elpaso area of Ngong approximately 200metres off Ngong Road branching off from just before Shell Petrol Station and approximately 900 metres from Naivas (Vet) Supermarket

DESCRIPTION:

Partially developed quarter acre plot with a block of apartments comprising of 2 units of 2 bedroom each with possibility of further development of the plot

AMENITIES:

- Ample Parking
- Reliable water, sewer and electricity
- Developed neighborhood

STATUS OF THE PROJECT:

Ready for immediate development

PRICE:

Accepting offers

LAND ALONG LIMURU ROAD [PL027]

LOCATION:

Along Limuru Road at Redhill after Kiambu Road

DESCRIPTION:

Block of 17.16 acres of land

AMENITIES:

- Proximity to shopping malls
- Ideal for commercial and residential developments
- Well drained red soil
- Access to electricity and water

PRICE:

Accepting offers

COMMERCIAL PLOT IN NANYUKI [PL031]

LOCATION:

Nanyuki Town (CBD)

DESCRIPTION:

Eighth acre commercial plot

AMENITIES:

- Connection to power mains
- Access to banks, malls and social amenities
- Ideal for construction of commercial buildings or shopping complex

PRICE:

Accepting offers

INDUSTRIAL LAND FOR SALE IN MLOLONGO [PL 032]

LOCATION:

The property is located off Mombasa Road and along old Mombasa Road Mlolongo area, Machakos county.

DESCRIPTION:

5.399 acre parcel of land

AMENITIES:

- Mains electricity available
- Water and sewer connection available from immediate neighborhood
- Perimeter wall

STATUS OFF THE PROJECT:

Ready for immediate development

PRICE:

Accepting offers

RESIDENTIAL PLOT IN LANET [PL045]

LOCATION:

Lanet Tubuga area, about 300 metres off Lanet - Dundori Tarmac Road and about 500 metres to the north west of

DESCRIPTION:

1.0165 acres

PRICE:

Accepting offers

LAND IN ISINYA [PL050]

LOCATION:

Located along Natendereti area, Kipeto Sublocation, Isinya. 2.5Km from Isinya Shopping centre

DESCRIPTION:

1 acre piece of land, ideal for immediate development or farming. Title is freehold.

PRICE:

Ksh 4,500,000.00

PRIME LAND IN SPRING VALLEY [PL043]

LOCATION:

Adjacent to Spring Valley roundabout off Kabete road

DESCRIPTION:

This is a prime 2.15 acres piece of Land in Spring valley.

AMENITIES:

- Connection to electricity, water and sewer mains
- Possible access via 2 other roads – Shanzu Link and Shanzu Road
- Masonry perimeter walling round the entire property
- Fairly flat with a regular shape
- Red loamy soils and mature trees
- Strategically located near social amenities

PRICE:

Accepting offers

PLOTS FOR SALE IN RUIRU KIBICHOI AREA [PL051]

LOCATION:

14 Kms (15 minutes drive) from Thika Superhighway accessed through Ruiru town or Kimbo Junction

DESCRIPTION:

Residential plots in a gated community

AMENITIES:

- Perimeter fence
- Borehole
- Recreational park and children's playground
- Electricity available
- Tarmacked main road

PRICE:

Ksh 1,950,000.00 for eighth of an acre

PLOTS FOR SALE IN NAIROBI CBD [PL044]

LOCATION:

Nairobi CBD Utalii Street

DESCRIPTION:

Two vacant plots measuring 0.0396 ha and 0.1146 ha respectively

PRICE:

Accepting offers

LAND IN MOWLEM AREA [PL059]

LOCATION:

300m off Komarock road in Mowlem area Nairobi and next to Tononoka Rolling Mills.

DESCRIPTION:

24.85 Acres parcel of land that is rectangular shaped, fairly level and with mixed soil . Part of the land is enclosed with razor wire and electric fence while the rest is open.

AMENITIES:

Perimeter wall	Office Block	Workshop
Electric Fence	Control room	Scrap metal yard

Price
Accepting offers

PLOTS FOR SALE AT MIGAA [PL065]

LOCATION:

The property is located within the Migaa Golf course and is available for residential home development, supported by infrastructure.

AMENITIES:

- Water
- Power
- House Designs
- Fenced and Gated
- Tarmac Road

STATUS OF THE PROJECT:

Ready for immediate development

PRICE:
From Ksh 7,000,000.00 per eighth acre plot

LAND FOR SALE IN WAKULIMA MARKET AREA [PL062]

LOCATION:

The property is situated along Haile Selassie Road within Wakulima Market area, Nairobi City Centre.It is located directly opposite Wakulima House and Wakulima Market

DESCRIPTION:

1.02 Acres ready for development

STATUS OF THE PROJECT:

Ready for immediate development

PRICE:
Accepting offers

PLOTS FOR SALE IN MAMBRUI AREA, MALINDI [PL066]

LOCATION:

The property is located in Mambui area in Malindu, Kilifi County and is available for residential, agricultural or commercial use; with the required supporting infrastructure in place.

STATUS OF THE PROJECT:

Ready for development.

AMENITIES:

- Water
- Beaconed (ready titles for residential plots)
- Murram Road

PRICE:

Ksh 1,000,000.00 for an eighth acre residential plot

Ksh 5,000,000.00 for a 3 acre agricultural plot

Ksh 14,000,000.00 for for 1 acre commercial plot

Ksh 8,000,000.00 for half acre commercial plot

PLOTS FOR SALE AT KONZA [PL064]

LOCATION:

The property is located in Ilpolosat area of Kajiado county. The branch off is to the right at Ketraco Konza substation along Katumani-Konza Road. Notable landmarks also include Naserian Primary School and Festival Harvest Church, Osotus.

DESCRIPTION:

Eighth acre plots

STATUS OF THE PROJECT:

Ready for immediate development

PRICE:
Phase 2- 350,000.00 per eighth acre plot

LAND IN ISINYA [PL067]

LOCATION:

Located within Isinya area, Kajiado County, approximately 1.5 kilometres off Pipeline (Isinya – Kiserian) Road, branching left before Parantai National Oil Petrol Station and approximately 400 metres to the South of Technosteel Industries Limited.

DESCRIPTION:

100 acres available in bulk or portions of 10.85 acres, 14.1 acres, 20 acres, 25.1 acres, 30 acres

PRICE:

Accepting offers

PRIME PLOTS FOR SALE IN THIKA [PL068]

LOCATION:

Within a gated Golf Estate in Thika area, Kiambu County.

DESCRIPTION:

Prime serviced eighth-acre plots (0.125 Acre)

AMENITIES:

- Water and Electricity mains for connection
- Cabro-paved Drive and Walk-ways
- Well Drained Red Soils
- Gatehouse

STATUS OF THE PROJECT:

Ready for development.

PRICE:

Ksh 7,000,000.00 per quarter acre plot

PLOTS FOR SALE AT ATHI RIVER [PL071]

LOCATION:

Athi River opposite Kenya Meat Commission(KMC) at Mutongoi Rd approximately 3.4 KM off Mombasa Road

DESCRIPTION:

1/8 Acre plots serviced.

AMENITIES:

- Water.
- Connection to electricity.

STATUS

Ready for immediate development

Connection to electricity.

PRICE:

Ksh 2,500,000.00 per 1/8 acre

PLOTS FOR SALE AT MIGAA [PL069]

LOCATION:

The plots are within Migaa gated community and are available for immediate development of residential houses

DESCRIPTION:

Prime serviced eighth-acre plots (0.125 Acre)

AMENITIES:

- Water
- Connection to electricity
- Security
- Internet

STATUS OF THE PROJECT:

Ready for immediate development.

PRICE:

Ksh 4,500,000.00 per 1/8 Acre

PLOTS ON MAAI MAHIU-NAIVASHA ROAD [PL072]

Description

Serviced plots along Naivasha- Mahiu Road

Amenities

- Piped Water
- Close proximity to SGR terminal
- Electricity

STATUS OF PROJECT:

Ready for immediate development

PRICE:

Ksh 900,000.00 per 1/8 Acre

PLOTS IN NAIVASHA [PL070]

DESCRIPTION:

Prime serviced plots along Moi South Lake Road

AMENITIES:

- Piped water and electricity
- All Weather roads
- Street Lighting
- CCTV-24 hr Security
- Swimming pool
- Gym
- Close proximity to SGR/MGR terminal

STATUS OF THE PROJECT:

Ready for immediate development.

Prices

Lake Side view

1 Acre - Ksh 15,000,000

1/2 Acre - Ksh 8,000,000

1/4 Acre - Ksh 5,000,000

PRIME PLOTS FOR SALE [PL073]

LOCATION:

Syokimau approximately 500m off Mombasa Road before Mlolongo Weigh Bridge.

DESCRIPTION:

2 Acres prime land for development.

AMENITIES:

- Fully Serviced Plot

PRICE:

Accepting Offers

LOTS FOR SALE IN KOMA MACHAKOS COUNTY [PLO74]

LOCATION:

The Property is in Koma area, Machakos County, touching recently tarmacked Menol - Koma Road, off Kangundo road.

DESCRIPTION:

19 acres block of land subdivided into 1/8(eighth) 151 plots both Commercial and residential.

AMENITIES:

- Controlled development.
- Double leaped steel gate with house.
- Chain link and barbed wire around property.
- Graded internal Humain roads.
- Power.
- Water.
- Ready Titles.

STATUS OF THE PROJECT:

Ready for development.

PRICE:

Residential 1/8 Acre for Ksh 1,500,000.00

Comercial 1/8 Acre for Ksh 2,000,000.00

PRIME PLOTS FOR SALE IN NAKURU INDUSTRIAL AREA.[PLO75]

LOCATION:

The property is in Nakuru Town Industrial Area on Harvester Road

DESCRIPTION:

Two blocks of 27.55 Acres each tottaling to 0.5 acres (1/2 acre)

THE PROPERTY CONSISTS:

- Permanent office / Laboratory block
- 5 single rooms (permanent block)
- Two large temporary stores mode of iron sheet and timber.

Property suitable for Industrial warehouses or commercial

AMENITIES:

- Perimeter wall
- Water
- Power
- Ready title deed

STATUS OF THE PROJECT:

Ready for development.

PRICE:

Ksh 59,000,000.00



Thank You!



CO-OPERATIVE BANK

We are you

Visit our physical Property Hub today at KUSCCO Centre Ground Floor – Kilimanjaro Avenue, Upper Hill or visit our virtual hub www.goodhome.co.ke to view our available properties.

Alternatively, you can call us on
0711 049 739, 0711 049 811 or 0711 049 266
e-mail us at goodhome@co-opbank.co.ke to get more information on these properties as well as available financing options.

DISCLAIMER:

The Co-operative Bank of Kenya Limited, its directors, partners, employees and related entities responsible for preparing this property listing believe that the information carried therein is correct. However, no representation or warranties of any nature whatsoever are given, intended or implied, and as such, you should rely on your own enquiries to the accuracy of the information or material available from this listing.

Please note that information provided on this listing is general information and is subject to change without notice and should not be relied upon as a substitute for legal, financial, real estate or other expert advice. The Co-operative Bank of Kenya Limited disclaims all liability and responsibility including negligence for any direct and or indirect loss or damage suffered by any person or company arising out of any use of the listing or any information or material available from it.