

GoodHome Property Hub

Property Listing

FEBRUARY 2024

GOOD
HOME
MORTGAGE



CO-OPERATIVE BANK

We are you



Residential Properties



CO-OPERATIVE BANK
We are you



APARTMENTS AT SABAKI [P002]

LOCATION:

Sabaki, approximately 4.5Km off Mombasa Road from the Total Junction

DESCRIPTION:

Bedsitters, studio, 1 & 2 bedroom apartments

STATUS OF THE PROJECT:

Ready for occupation

AMENITIES:

- Children Playing Area
- Guard House
- Ample Parking
- Borehole
- Cabro-paved driveway

PRICE

TYPE	PLINTH AREA	PRICE	INDICATIVE RENT
Bedsitters	16 sqm	Ksh 1,155,000.00	Ksh 3,500.00
Studios	20 sqm	Ksh 1,760,000.00	Ksh 4,000.00
1 Bedroom	30 sqm	Ksh 2,530,000.00	Ksh 7,000.00
2 Bedroom	40 sqm	Ksh 3,190,000.00	Ksh 10,000.00

APARTMENTS IN SYOKIMAU [P003]

LOCATION:

Syokimau, approximately 800 metres off Mombasa Road before the Mlolongo Weighbridge

AMENITIES:

- Open Plan Kitchen
- Alarm System
- Children's Play Area
- Ample Parking
- Laundry Area
- Perimeter Fencing
- Controlled Access

STATUS OF THE PROJECT:

Ready for occupation

DESCRIPTION:

2 and 3 bedroom apartments with master ensuite



PRICE

TYPE	PLINTH AREA	PRICE	INDICATIVE RENT
2 Bedroom	74 sqm	Ksh 6,950,000.00	Ksh 22,000.00
3 Bedroom	96 sqm	Ksh 8,800,000.00	Ksh 25,000.00
3 Br Maisonette	--	Ksh 9,000,000.00	Ksh. 50,000.00



APARTMENTS IN RACECOURSE AREA [P004]

LOCATION:

Racecourse Area, approximately 400 metres off Ngong Road

DESCRIPTION:

Studios, 1 and 2 bedroom apartments

STATUS OF THE PROJECT:

Ready for occupation

AMENITIES:

- Large Central Garden
- Swimming Pool
- Commercial Area
- Nursery School
- Rooftop Garden
- Ample Parking
- Play Area
- Borehole

PRICE

TYPE	PLINTH AREA	PRICE	INDICATIVE RENT
Studios	25 sqm	Ksh 3,500,000.00	Ksh 20,000.00
Standard 1 Bedroom	37 sqm	Ksh 4,600,000.00	Ksh 30,000.00
Deluxe 1 Bedroom	40 sqm	Ksh 4,800,000.00	Ksh 30,000.00
2 Bedroom	72 sqm	Ksh 7,800,000.00	Ksh 40,000.00
AirBnB Rates	--	Ksh 2,500 - Ksh 5,000	--



APARTMENTS IN RUAKA [POO6]

LOCATION:

Ruaka, approximately 200 metres off Limuru Road on Mbanya Drive

DESCRIPTION:

2 and 3 bedroom apartments (Master Ensuite)

AMENITIES:

- Cabro-paved Driveways
- Swimming Pool
- Gym
- Green Areas
- Ample Parking
- Electric Fence
- Spacious Balconies
- CCTV

STATUS OF THE PROJECT:

Ready for occupation

PRICE

TYPE	PLINTH AREA	PRICE	INDICATIVE RENT
2 Bedroom	82 sqm	Ksh 6,600,000.00	Ksh 35,000.00
3 Bedroom	104 sqm	Ksh 8,600,000.00	Ksh 45,000.00

APARTMENTS IN MOWLEM AREA [P010]

LOCATION:

Mowlem area, 600 M off Kangundo Road

DESCRIPTION:

1, 2 and 3 bedroom apartments

AMENITIES:

- Ample Parking
- Commercial Centre
- Sentry Unit (Guard Station)
- Kindergarten
- Gym
- Perimeter Fencing
- DSTV
- Swimming Pool

STATUS OF THE PROJECT:

Ready for occupation

PRICE

TYPE	OLD PRICE	PROMOTIONAL PRICE	RENTAL RETURN
1 Bedroom	Ksh 4,500,000.00	Ksh 3,800,000.00	Ksh 17,500.00
2 Bedroom	Ksh 6,000,000.00	Ksh 5,000,000.00	Ksh 27,500.00
3 Bedroom	Ksh 7,500,000.00	Ksh 6,000,000.00	Ksh 32,500.00



MAISONETTE IN LANG'ATA [P011]

LOCATION:

Southlands Estate in Langata, Nairobi County

DESCRIPTION:

3 Bedroom semi-detached Maisonette with a domestic servant quarter

AMENITIES:

- Elevated Water Tank
- Spacious Dining Area
- Cabro Paved Compound
- Dining Area
- Connection to Electricity, Sewer Services and Water Mains
- Car Port

STATUS OF THE PROJECT:

Ready for occupation

PRICE

Ksh 17,000,000.00





FEBRUARY 2024



APARTMENTS IN PARKLANDS [P012]

LOCATION:
Parklands, near The National Museums of Kenya

DESCRIPTION:
Luxurious apartments in Parklands

- AMENITIES:**
- Ample Parking
 - High Speed Lifts
 - Spacious Dining Area
 - American Kitchen
 - Spacious Lounge
 - Pantry

STATUS OF THE PROJECT:
Under construction

PRICE

TYPE	PRICE
2 Bedroom	Ksh 12,500,000.00
3 Bedroom	Ksh 13,000,000.00

APARTMENTS IN NGONG TOWN [P019]

LOCATION:
Ngong Town, near the Co-operative Bank Branch, 400m off Ngong Road on Oloolua Road

DESCRIPTION:
2 and 3 bedroom (Master Ensuite) apartments (30 units in total)

- AMENITIES:**
- Lounge Dining Room
 - Adequate Water Storage
 - Perimeter Fencing
 - 1 Parking Slot Per Apartment
 - Fitted Kitchen

STATUS OF THE PROJECT:
Ready for occupation

PRICE

TYPE	PLINTH AREA	PRICE	RENTAL INCOME
2 bedroom	86 sqm	Ksh5,500,000.00	Ksh 27,000.00
3 Bedroom	103 sqm	Ksh 6,500,000.00	Ksh 32,000.00



ONE APARTMENT UNIT IN NYALI [P025]

LOCATION:
Nyali, approximately 600M off Links Road

DESCRIPTION:
3 bedroom (Master Ensuite) apartment on first floor

- AMENITIES:**
- Borehole On Site
 - Lounge Area
 - Laundry Area
 - Controlled Access
 - Activated Rooftop (Terrace)
 - Ample Parking
 - Detached Servants Quarter

STATUS OF THE PROJECT:
Ready for occupation

PRICE

Ksh 13,000,000.00





MANSION IN HARDY, KAREN [P030]

LOCATION:
Hardy Area, Karen

DESCRIPTION:
Double storey, 4 bedroom (all en-suite) town house, measuring 520 sqm, developed on half an acre

- AMENITIES:**
- Ensuite DSQ
 - Landscaped Gardens
 - Store Block
 - Gate House
 - Connection To Electricity And Water Mains
 - Gazebo

PRICE

Accepting Offers

BLOCK OF APARTMENTS, ELDORET [P033]

LOCATION:
Located 200meters off Eldoret - Malaba Highway.

DESCRIPTION:
Newly constructed four storey building comprised of 1 bedroom (1 unit) and 2 bedrooms (15 units) apartments (Master Ensuite).

- AMENITIES:**
- Kitchen Cabinets
 - Murram Access Road
 - Close Proximity To Eldoret Town
- STATUS OF THE PROJECT:**
Ready for occupation

PRICE

Ksh 50,000,000.00

Expected monthly rental income - Ksh 132,000.00



MAISONETTE ON MOMBASA ROAD [P039]

LOCATION:
Along Mombasa Road at Sabaki

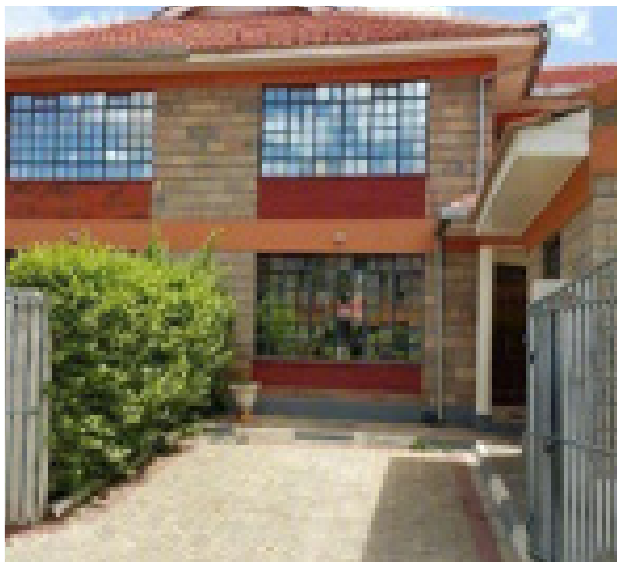
DESCRIPTION:
4 bedroom (Master Ensuite) maisonette with a DSQ

- AMENITIES:**
- Separate Dining Area
 - Kitchen with Pantry
 - Laundry Area
 - Cloakroom
 - 3 Bathrooms
 - Parking Spaces for 2 Cars
 - Children's Play Area
 - Water Storage Tank
 - 24/7 Security

STATUS OF THE PROJECT:
Ready for occupation

PRICE

TYPE	PLINTH AREA	PRICE	INDICATIVE RENT
4 Bedroom	160 sqm	Ksh 16,000,000.00	Ksh 50,000.00





HOTEL APARTMENTS IN MTWAPA, KILIFI COUNTY [P048]

LOCATION:

Mtwapa next to club Tropicana about 100 meters off Malindi Mombasa Road with an exit directly opposite National Bank of Kenya premises

DESCRIPTION:

Hotel complex ready for daily bookings

AMENITIES:

- Borehole on Site
- Spacious Rooms
- Laundry Area
- Lounge Area
- Controlled Access
- Ample Parking
- Activated Rooftop (Terrace)
- DSQ

STATUS OF THE PROJECT:

Ready for Occupation

PRICE

Accepting Offers

BUNGALOW IN MLOLONGO [P049]

LOCATION:

Along Mombasa Road – At Mlolongo, off Katani Road

DESCRIPTION:

3 Bedroom Bungalow (Master En-suite)

AMENITIES:

- Individual Title Deed
- 2 Private Parking Slots
- Kitchen Fitted With Cabinets
- Estate Boundary With Electric Fence
- Laundry Area
- Borehole

STATUS OF THE PROJECT:

Ready for occupation

PRICE

Ksh 7,500,000 .00(Negotiable)



A BLOCK OF APARTMENTS IN NYANCHWA AREA KISII [P050]

LOCATION:

Kisii County, Nyanchwa

DESCRIPTION:

5 storey block of flats comprising of 1 shop, 5 units of 1 bedroom flats & 9 units of 2 bedroom flats on 0.0711 of an acre

AMENITIES:

- Mains for Electricity & Water Connected to The Property
- Drainage to Septic Tank/Sewer Line
- Area Is Covered By Cellular Mobile Networks
- Floors are Finished in Ceramic Tiles
- Close Proximity to Kisii Town

STATUS OF THE PROJECT:

Ready for occupation



PRICE	INDICATIVE RENT
Ksh 19,000,000.00	Ksh 180,000.00



GATED COMMUNITY IN KISAJU [P052]

LOCATION:
Kisaju, off Namanga Road

DESCRIPTION:
A modern estate sitting on 32 Acres comprising of 1, 2 & 3 Bedroom apartments and Townhouses with & without DSQ to complement your contemporary lifestyle in a tranquil environment away from the flurry of the city

- AMENITIES:**
- Children Play Ground
 - Electric Fence
 - Cabro Paved Driveways
 - Jogging Track
 - Two Boreholes
 - Retail and Commercial Center
 - Ample Parking
 - Solar Water Heater

PRICE FOR APARTMENTS

UNIT	PRICE
1 Bedroom	Ksh 1,906,000.00
2 Bedroom	Ksh 3,200,000.00
3 Bedroom	Ksh 3,800,000.00

PRICE FOR TOWNHOUSES

UNIT	PRICE
3 Bedroom without DSQ	Ksh 5,800,000.00
3 Bedroom with DSQ	Ksh 6,200,000.00

APARTMENTS IN KITISURU [P053]

LOCATION:
Kitisuru, off Lower Kabete

- AMENITIES:**
- Ample Parking
 - Borehole
 - Lifts
 - Cabro Paved Compound
 - Perimeter Wall with Electric Fence

DESCRIPTION:
3 Bedroom Apartments (Master Ensuite)

STATUS OF THE PROJECT:
Ready for occupation

PRICE

TYPE	PLINTH AREA	PRICE
3 bedroom + DSQ	123 sqm	Ksh10,900,000.00
3 Bedroom	112 sqm	Ksh 9,500,000.00



APARTMENTS IN RUAKA [P054]

LOCATION:
Ruaka, near Red Hill Road and Total Energies Ruaka

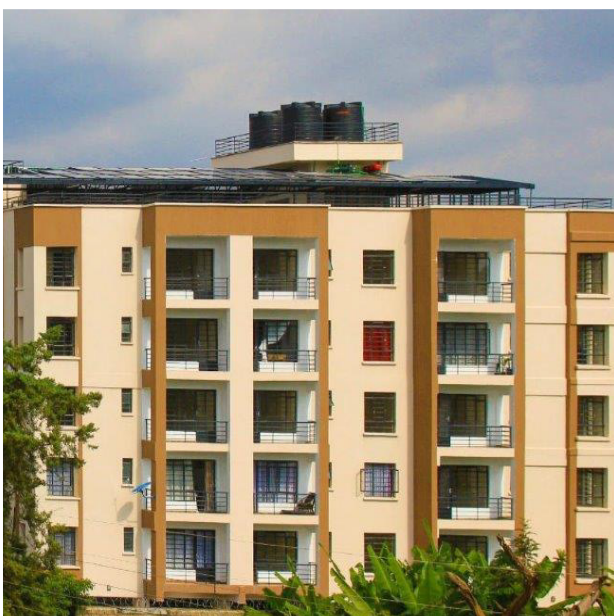
DESCRIPTION:
2 and 3 Bedroom Apartments

- AMENITIES:**
- Borehole
 - Solar Water Heating System
 - Children's Play Area
 - Roof Garden
 - Electric Fence along The Perimeter
 - High Speed Lift
 - Ample Parking
 - Clothes Drying Yard on Roof
 - CCTV and Backup Generator for Security

STATUS OF THE PROJECT:
Ready for occupation

PRICE

TYPE	PRICE FROM	Rent
2 bedrooms	Ksh 6,800,000.00	Ksh40,000.00
3 Bedroom	Ksh7,950,000.00	Ksh 50,000.00





MAISONETTE IN SYOKIMAU [P055]

LOCATION:
Syokimau, 900m from the tarmac from Mombasa Road

DESCRIPTION:
The house has been converted into single rooms, bedsitters, and a 1 bedroom that are ideal for rental.

STATUS OF THE PROJECT:
Ready for occupation

PRICE

Ksh 30,000,000.00

TOWNHOUSE IN KILELESHA [P063]

LOCATION:
Kileleshwa Vihiga Road

DESCRIPTION:
5 bedroom (all en-suite) townhouse with 2 servant quarters occupying approximately an eighth of an acre in a compound of 4 Townhouses

- AMENITIES:**
- Family Room
 - Intercom
 - CCTV Surveillance
 - Back-up Generator
 - Open Plan Kitchen Fitted with Microwave and Oven
 - Lush Garden

STATUS OF THE PROJECT:
Ready for occupation

PRICE

Accepting Offers



PRIME BLOCK OF APARTMENTS IN SHANZU [P064]



LOCATION:
The property is located in Shanzu, 1.5 km from Whitesands Beach Hotel and 100 meters off Mombasa Malindi Highway.

DESCRIPTION:
Units include; Studios, 1 bedroom and 2 bedroom apartments with a realizable rental income of Ksh.550,000.

- AMENITIES:**
- Swimming Pool
 - Power
 - Car Park
 - Water & Water Tanks
 - Perimeter Wall with Electric Fence

STATUS OF THE PROJECT:
Ready for occupation

PRICE

Accepting Offers

CURRENT RENT

Ksh 550,000.00



APARTMENT IN LAVINGTON AREA [P065]

LOCATION:

Situated on the 7th floor of the Pearl Residence on Oloitoktok Road, opposite the Methodist Resort and Conference Centre

DESCRIPTION:

This is a 3 bedroom (all en-suite), fully furnished apartment with a servant's room measuring 241 sqm (2,600 sqft)

AMENITIES:

- Kitchen with Balcony and Pantry
- Laundry Area
- Contemporary Furniture Designs
- Quality Tile Flooring
- Gypsum Textured Ceiling
- Separate Servant's Quarter access
- Heated Swimming Pool
- Mini Theatre
- Borehole on site
- High Speed Lifts
- Banquet Hall and Common Kitchen
- 2 parking slots per House
- Separate Elevator from Basement to 1st Floor Level for Security purposes.
- Fitted Standard Equipment - TV, Music System, Washing Machine
- Vinyl Matte Finished Walls
- High-tech appliances
- Standard Light fittings
- Concealed Plumbing
- Wallpaper Finishing
- Fully Equipped Gym and Spa
- Water play zone for children
- Security with CCTV Cameras
- Security Access control into property
- Car registration Reader Barrier
- Centralized Property Management
- Back-up Generator for all Houses

STATUS OF THE PROJECT:

Ready for occupation

PRICE

Ksh 26,000,000.00
(Negotiable)

RENTAL RETURN

Ksh 140,000.00
(Service charge inclusive)

APARTMENTS IN NGARA WEST AREA [P066]

LOCATION:

Located along Mushebi Road in Ngara West, opposite Stima Investment Co-operative Plaza, with a quick and direct access to the Nairobi Central Business District

DESCRIPTION:

This is an off-plan housing project comprising of studios (18sqm) and 1 bedroom units (32.5 sqm)

AMENITIES:

- Ample Parking
- Borehole & Water Storage
- A mini-commercial centre
- Roof top Terrace
- Backup Generator
- Two High Speed Lifts
- Balcony on all 1 Bedrooms
- Boundary Wall with Electric fence
- CCTV Surveillance
- Refuse Room
- Internet Ready Apartments
- Gym
- Two Fire Escapes

STATUS OF THE PROJECT:

Under construction

PRICE (CASH OPTION)

Type	Selling Price	Booking Deposit (25%)	Within 30 Days 75%
1 Bedroom	Ksh 4,600,000.00	Ksh 1,150,000.00	Ksh 3,450,000.00

PRICE (MORTGAGE OPTION)

Type	Selling Price	On or Before signing agreement (25%)	Balance on completion
1 Bedroom	Ksh 4,750,000.00	Ksh 1,187,000.00	Ksh 3,563,000.00

PRICE (INSTALMENT OPTION)

Type	Selling Price	25% Booking on Deposit	50% During Construction	25% on completion
1 Bedroom	Ksh 4,850,000.00	Ksh 1,212,500.00	Ksh 2,425,000.00	Ksh 1,212,500.00





FEBRUARY 2024



RESIDENTIAL APARTMENTS AND COMMERCIAL SPACE IN UPPER HILL [P067]

LOCATION:

The property is located at Chyulu Road- Mara Road junction in Upperhill, Nairobi.

DESCRIPTION:

Modern high quality 2 and 3 bedroom apartments that are strategically located and ideal for use as furnished and unfurnished residential suites and office spaces. The property also includes a commercial complex with other well-maintained office spaces.

AMENITIES:

- High Speed Lifts
- Borehole Water
- Two Balconies
- Spacious 2 and 3 Bedrooms (all en-suite).
- 24-hour Security
- Controlled Access
- Spacious Living Rooms
- Ample Parking
- Spacious Kitchen with Pantry

STATUS OF THE PROJECT:

Ready for occupation

PRICE

TYPE	PRICE
2 bedroom	Ksh 15,600,000.00
3 Bedroom with DSQ	Ksh 17,500,000.00
Commercial Space	Ksh 13,800.00 per square foot

APARTMENTS IN LAVINGTON AREA [P068]

LOCATION:

Situated along Argwings Kodhek Road, Lavington in Nairobi.

DESCRIPTION:

Luxurious two-block apartment with 2, 3 bedrooms with dsq & 3-bedroom duplex with dsq

AMENITIES:

- Solar Water Heaters
- Swimming Pool
- Video Intercom
- Rooftop Barbeque
- Rooftop Lounge Deck
- Back-up generators
- Multiple Balconies
- Electric Fence
- High speed lifts
- 24 hour security
- Fitted Gym
- Borehole

STATUS OF THE PROJECT:

The project will be complete and ready for occupation by the end of April 2024



PRICE

TYPE	PLINTH AREA (Sqm)	PRICE FROM
2 bedrooms	145.6, 139.8, 138.6 & 113.6	Ksh 16-18 Million
3 Bedroom + DSQ	183.4 & 180.7	Ksh 26,000,000.00
3 Bedroom Duplex	156.48	Sold Out

Monthly Rental Income	2 Bedroom	2 Bedroom = DSQ	3 Bedroom Duplex
Unfurnished	Ksh 130,000.00	Ksh 160,000.00	Ksh 180,000.00
Furnished	Ksh 200,000.00	Ksh 250,000.00	Ksh 280,000.00
AirBnb	Ksh 250,000.00	Ksh 300,000.00	Ksh 350,000.00



APARTMENT IN KILELESHA [P069]

LOCATION:

Situated along Kikambala Road, Kileleshwa, Nairobi, Kenya

DESCRIPTION:

The property is a luxurious apartment complex with spacious and comfortable 2 bedroom, 1 bedroom, and studio apartment units, complete with fully fitted kitchens.

AMENITIES:

- Solar water heater
- Fully Fitted Gym
- High Speed Lifts
- Borehole
- Rooftop Lounge Deck
- Video Intercom
- 24 hour Security
- Electric Fence
- Rooftop Barbecue
- Multiple Balconies
- Backup Generator

STATUS OF THE PROJECT:

Ready for occupation

PRICE

TYPE	PLINTH AREA (sqm)	PRICE FROM
Studio	47.9	Ksh 8,000,000.00
1 Bedroom	57.1	Ksh 10,500,000.00
2 Bedroom	119.9 & 136.6	Ksh 16-17 Million

Rental Income	Studio	1 Bedroom	2 Bedroom Duplex
Unfurnished(Monthly)	Ksh 60,000.00	Ksh 75,000.00	Ksh 110,000.00
Furnished(Monthly)	Ksh 100,000.00	Ksh 135,000.00	Ksh 175,000.00
AirBnb(Daily Rates)	Ksh 5,000.00	Ksh 6,000.00	Ksh 7,000.00

TOWNHOUSE IN RUIRU [P070]

LOCATION:

Situated within a gated-estate off the Eastern Bypass Rd in Kamakis Area, Ruiru, Kiambu County.

DESCRIPTION:

Newly built and well maintained townhouse that is 4 Bedroom (all ensuite) with a dsq.

AMENITIES:

- Cabro Paved Walkway and Parking
- Bedrooms are all-ensuite
- Flat-roof Terrace
- Stone Block Perimeter Wall

STATUS OF THE PROJECT:

Ready for occupation

PRICE

Ksh 16,000,000- 18,000,000





Commercial Properties



CO-OPERATIVE BANK
We are you



OFFICE SPACE IN UPPER HILL [P007]

LOCATION:
Upper Hill Area

DESCRIPTION:
An ultra-modern, state of the art, 18 storey office block set on 1 acre

- AMENITIES:**
- Conference Facilities
 - Banking Hall Access Control
 - CCTV Backed Security
 - ICT Structured Cabling
 - High Speed Lifts
 - 164 Parking Bays
 - Access Control
 - Generator

STATUS OF THE PROJECT:
Ready for occupation

PRICE

Ksh 145,000.00 per sqm and Ksh 1,000,000.00 per parking slot

OFFICE SPACE IN WESTLANDS [P022]

LOCATION:
Westlands, off Waiyaki Way

DESCRIPTION:
3 office suites, measuring a total of 420 sqm, located in a well-maintained office block.

- AMENITIES:**
- 6 High Speed Lifts
 - 24 Hour Security
 - Perimeter Fencing
 - Electric Fence
 - Back-up Generator
 - Borehole On Site
 - 6 Parking Bays Including Visitors' Parking
 - Reliable Water Supply

STATUS OF THE PROJECT:
Completed and occupied

PRICE

TYPE	PLINTH AREA	PRICE	INDICATIVE RENT
3 Office Suites on Tower 2	1510 sqm	Ksh18,000,000.00	Ksh 100.00 per sqft



COMMERCIAL BUILDING IN NYERI [P029]

LOCATION:
Nyeri Town in the CBD.

DESCRIPTION:
4 storey commercial building (ground plus four floors) complete with basement parking

- AMENITIES:**
- Connection to Main Water & Electricity
 - Kitchenette And Washrooms For All Floors
 - Overhead And Basement Water Storage
 - High Speed Lifts

STATUS OF THE PROJECT:
Ready for occupation

PRICE

Accepting Offers

INDICATIVE RENT

Ksh 800,000 per month



OFFICE SPACE ON MOMBASA ROAD [P034]

LOCATION:
Mombasa Road next to Nextgen Mall

DESCRIPTION:
4 units office space for sale

- AMENITIES:**
- Washrooms
 - Lifts
 - Chute Facilities
 - Ample Parking
 - CCTV Cameras
 - Standby Generator

STATUS OF THE PROJECT:
Ready for occupation

PRICE	INDICATIVE RENT
Ksh 11,000,000.00 each	Ksh 81,500.00 per month

COMMERCIAL COMPLEX IN NAIROBI CBD [P062]

LOCATION:
NCBD at the junction of Koinange Street and Monrovia Street

DESCRIPTION:
A commercial complex on an eighth of an acre plot comprising of seven levels and two roof extensions with a total build up area of 34,928 square feet

- AMENITIES:**
- Connection to Electricity, Sewer Services and Water Mains
 - Ample Parking
 - Two Underground Water Tanks
 - Fire Detection And Fire-fighting Equipment

STATUS OF THE PROJECT:
Ready for occupation

PRICE

Accepting Offers



COMMERCIAL COMPLEX IN SPRING VALLEY [P063]

LOCATION:
In Spring Valley along Kabete Road in a quiet and convenient area, right opposite Spring Valley Police Station

DESCRIPTION:
A commercial block comprising of four levels with a total build up area of 18,481 square feet.

- AMENITIES:**
- Electricity, sewer and water mains connection
 - Ample parking
 - 2 dedicated lifts
 - Fiber Connectivity

STATUS OF THE PROJECT:
Ready for occupation

PRICE

Accepting offers





Land & Plots



CO-OPERATIVE BANK
We are you



FEBRUARY 2024

RESIDENTIAL LAND IN THIKA [PL005]

LOCATION:

Along Gatanga Road

DESCRIPTION:

Blocks of land ranging from 5 acre blocks up to 115-acre blocks

AMENITIES:

- Murram graded internal roads
- Close proximity to Thika-Gatanga Road
- Well Drained Red Soils

PRICE

Ksh 14,500,000.00 per acre (Negotiable)

PLOT IN RUIRU [PL006]

LOCATION:

Mwalimu Farm area of Ruiru, Kiambu County. Located 1.5 km off the Nothern bypass, deviating west of Joska Shopping Centre.

DESCRIPTION:

Block of 8 acres of land being sold per 1 acre.

AMENITIES:

- Freehold title
- Water and electricity available for immediate connection
- Murram graded Roads
- Proximity to a shopping centre

STATUS:

Ready for immediate development

PRICE

Ksh 4,000,000.00 per acre

MIXED USE LAND IN NGOLIBA, THIKA [PL010]

LOCATION:

Ngoliba area off Thika Road near Kenchic.
Access from the Thika – Garissa Highway is via the Makuyu – Ithanga – Gati-iguru Road (recently tarmacked) approximately 8 km

DESCRIPTION:

Various residential and commercial plots.

AMENITIES:

- Tarmac access from main road
- Murram level driveways
- Proximity to KPLC connection point

PRICE

Ksh 850,000.00 per eighth of an acre

LAND FOR SALE IN KAJIADO [PL014]

LOCATION:

Kajiado Town near UMMA University approximately 1.5 KM off Namanga Road in Dalalekutuk Area

DESCRIPTION:

200 acres accessible via an all-weather road and on free hold title

PRICE

Ksh 3,660,000.00 per acre

LAND IN KAJIADO [PL015]

LOCATION:

Kajiado Town near Naisula School approximately 1.7km off Namanga Road in Dalalekutuk Area

DESCRIPTION:

120 acres accessible via an all-weather road and on free hold title

PRICE

Ksh 3,900,000.00 per acre

LAND FOR SALE IN KISAJU AREA [PL016]

LOCATION:

Isinya approximately 7 Km from Isinya Township and 800 M off the Isinya – Kiserian Road

DESCRIPTION:

192 acres accessible via an all-weather road and on free hold title

PRICE

Ksh 3,900,000.00 per acre

RESIDENTIAL PLOTS NEAR TATU CITY [PL017]

LOCATION:

In Kamiti area of Kiambu off the Kiambu – Ruiru Road, adjacent to Tatu City and Mukuyu River

DESCRIPTION:

Quarter acre plots for sale in a gated community

AMENITIES:

- Proximity to water and electricity mains for connection
- Proposed cabro paved drive and walk-ways
- Proposed street lighting
- Proposed common grounds and children's play areas
- Well drained red soils
- Gatehouse and main trunk roads under construction

STATUS:

Ready for immediate development

PRICE

Position of Land:
Gentle Slope/ Elevated – 8,500,000.00 per quarter acre

Near Wateraways – Ksh 9,000,000.00 per quarter acre



FEBRUARY 2024

PLOTS IN MERISHO MATASIA [PL022]

LOCATION:

Merisho Area, approximately 3km from Matasia Trading Centre

DESCRIPTION:

Quarter of an acre residential plots

AMENITIES:

- Touching the recently tarmacked Merisho – Matasia Road
- Proximity to schools, hospitals and other social amenities
- Water and electricity available for connection

STATUS:

Ready for immediate development with ready free hold titles for each plot

PRICE

Residential – Ksh 6,000,000.00 quarter acre plot

Commercial – Ksh 6,500,000.00 quarter acre plot

RESIDENTIAL PLOTS IN KITENGELA [PL026]

LOCATION:

Kitengela, 2 Km off Namanga Road and adjacent to Kampala International University

DESCRIPTION:

Eighth Acre plots for sale

AMENITIES:

- Fence and gate
- Controlled development
- Easy access
- Ready titles

PRICE

Ksh 1,300,000.00 for eighth of an acre

LAND ALONG LIMURU ROAD [PL027]

LOCATION:

Along Limuru Road at Redhill after Kiambu Road

DESCRIPTION:

Block of 17.16 acres of land

AMENITIES:

- Proximity to shopping malls
- Ideal for commercial and residential developments
- Well drained red soil
- Access to electricity and water

PRICE

Accepting Offers

LAND FOR SALE IN MAKUYU, MURANGA COUNTY [PL028]

LOCATION:

Makuyu in Murang'a county

DESCRIPTION:

972 acre parcel of land ideal for subdivision for residential and holiday homes, institutional use or large scale farming or mixed use developments.

AMENITIES:

- Water and electricity within the property ready for connection
- Murrum grade roads within the property
- Touching tarmac
- Well drained red soils
- Strategically located dam within the property
- Scenic views of the Mwea Plains

PRICE

Accepting Offers

PARTIALLY DEVELOPED LAND FOR SALE IN NGONG TOWN [PL030]

LOCATION:

Zambia/Elpaso area of Ngong approximately 200metres off Ngong Road branching off from just before Shell Petrol Station and approximately 900 metres from Naivas (Vet) Supermarket

DESCRIPTION:

Partially developed quarter acre plot with a block of apartments comprising of 2 units of 2 bedroom each with possibility of further development of the plot

AMENITIES:

- Ample Parking
- Reliable water, sewer and electricity
- Developed neighborhood

STATUS:

Ready for immediate development

PRICE

Accepting Offers

COMMERCIAL PLOT IN NANYUKI [PL031]

LOCATION:

Nanyuki Town (CBD)

DESCRIPTION:

Eighth acre commercial plot

AMENITIES

- Connection to power mains
- Access to banks, malls and social amenities
- Ideal for construction of commercial buildings or shopping complex

PRICE

Accepting Offers



INDUSTRIAL LAND FOR SALE IN MLOLONGO [PL032]

LOCATION:

The property is located off Mombasa Road and along old Mombasa Road Mlolongo area, Machakos county.

DESCRIPTION:

5.399 acre parcel of land

AMENITIES:

- Mains electricity available
- Water and sewer connection available from immediate neighborhood
- Perimeter wall

STATUS:

Ready for immediate development

PRICE

Accepting Offers

PRIME LAND IN SPRING VALLEY [PL043]

LOCATION:

Adjacent to Spring Valley roundabout off Kabete road

DESCRIPTION:

This is a prime 2.15 acres piece of Land in Spring valley.

AMENITIES:

- Connection to electricity, water and sewer mains
- Possible access via 2 other roads – Shanzu Link and Shanzu Road
- Masonry perimeter walling round the entire property
- Fairly flat with a regular shape
- Red loamy soils and mature trees
- Strategically located near social amenities

PRICE

Accepting Offers

PLOTS FOR SALE IN NAIROBI CBD [PL044]

LOCATION:

Nairobi CBD Utalii Street

DESCRIPTION:

Two vacant plots measuring 0.0396 ha and 0.1146 ha respectively

PRICE

Accepting Offers

RESIDENTIAL PLOT IN LANET [PL045]

LOCATION:

Lanet Tubuga area, about 300 metres off Lanet – Dundori Tarmac Road and about 500 metres to the north-west

DESCRIPTION:

1.0165 acres

PRICE

Accepting Offers

LAND IN ISINYA [PL050]

LOCATION:

Located along Natendereti area, Kipeto Sublocation, Isinya. 2.5Km from Isinya Shopping centre

DESCRIPTION:

1 acre piece of land

STATUS:

Ideal for immediate development or farming. Title is freehold.

PRICE

Ksh 4,500,000.00

PLOTS FOR SALE IN RUIRU KIBICHOI AREA [PL051]

LOCATION:

14 Kms (15 minutes drive) from Thika Superhighway accessed through Ruiru town or Kimbo Junction

DESCRIPTION:

Residential plots in a gated community

AMENITIES:

- Perimeter fence
- Borehole
- Recreational park and children's playground
- Electricity available
- Tarmacked main road

PRICE

Ksh 1,950,000.00 for eighth of an acre

LAND IN MOWLEM AREA [PL059]

LOCATION:

300m off Komarock road in Mowlem area Nairobi and next to Tononoka Rolling Mills.

DESCRIPTION:

24.85 Acres parcel of land that is rectangular shaped, fairly level and with mixed soil. Part of the land is enclosed with razor wire and electric fence while the rest is open.

AMENITIES:

- | | | |
|----------------|--------------|------------------|
| Perimeter wall | Office Block | Workshop |
| Electric Fence | Control room | Scrap metal yard |

PRICE

Accepting Offers

LAND FOR SALE IN WAKULIMA MARKET AREA [PL062]

LOCATION:

The property is situated along Haile Selassie Road within Wakulima Market area, Nairobi City Centre. It is located directly opposite Wakulima House and Wakulima Market

DESCRIPTION:

1.02 Acres

STATUS:

Ready for immediate development

PRICE

Accepting Offers



FEBRUARY 2024

PLOTS FOR SALE AT KONZA [PL064]

LOCATION:

The property is located in Ilpolosat area of Kajiado county. The branch off is to the right at Ketraco Konza substation along Katumani-Konza Road. Notable landmarks also include Naserian Primary School and Festival Harvest Church, Osotus.

DESCRIPTION:

Eighth acre plots

STATUS:

Ready for immediate development

PRICE

Phase 2- 350,000.00 per eighth acre plot

LAND IN ISINYA [PL067]

LOCATION:

Located within Isinya area, Kajiado County, approximately 1.5 kilometres off Pipeline (Isinya – Kiserian) Road, branching left before Parantai National Oil Petrol Station and approximately 400 metres to the South of Technosteel Industries Limited.

DESCRIPTION:

100 acres available in bulk or portions of 10.85 acres, 14.1 acres, 20 acres, 25.1 acres, 30 acres

PRICE

Accepting Offers

PRIME PLOTS FOR SALE IN THIKA [PL068]

LOCATION:

Within a gated Golf Estate in Thika area, Kiambu County.

DESCRIPTION:

Prime serviced eighth-acre plots

AMENITIES:

- Water and Electricity mains for connection
- Cabro-paved Drive and Walk-ways
- Well Drained Red Soils
- Gatehouse

STATUS:

Ready for development.

PRICE

Ksh 7,000,000.00 per quarter acre plot

PLOTS FOR SALE AT MIGAA [PL069]

LOCATION:

The plots are within Migaa gated community and are available for immediate development of residential houses

DESCRIPTION:

Prime serviced eighth-acre plots

AMENITIES:

- Water
- Connection to electricity
- Security
- Internet

STATUS:

Ready for immediate development.

PRICE

Ksh 4,500,000.00 per 1/8 Acre

PLOTS IN NAIVASHA [PL070]

DESCRIPTION:

Prime serviced plots along Moi South Lake Road

AMENITIES:

- Piped water and electricity
- All Weather roads
- Street Lighting
- CCTV-24 hr Security
- Swimming pool
- Gym
- Close proximity to SGR/MGR terminal

STATUS OF THE PROJECT:

Ready for immediate development.

PRICES

1 Acre - Ksh 15,000,000

1/2 Acre - Ksh 8,000,000

1/4 Acre - Ksh 5,000,000

PLOTS FOR SALE AT ATHI RIVER [PL071]

LOCATION:

Athi River opposite Kenya Meat Commission(KMC) at Mutongoni Rd approximately 3.4 KM off Mombasa Road

DESCRIPTION:

Serviced eighth acre plots

AMENITIES:

- Water.
- Connection to electricity.

STATUS

Ready for immediate development

PRICE

Ksh 2,500,000.00 per 1/8 acre



FEBRUARY 2024

PLOTS ON MAAI MAHIU-NAIVASHA ROAD [PL072]

LOCATION:

Along Naivasha - Maai Mahiu Road

DESCRIPTION:

Serviced eighth acre plots

AMENITIES:

- Piped Water
- Close proximity to SGR terminal
- Electricity

STATUS:

Ready for immediate development

PRICE

Ksh 900,000.00 per 1/8 Acre

PRIME PLOTS FOR SALE IN SYOKIMAU [PL073]

LOCATION:

Syokimau approximately 500m off Mombasa Road before Mlolongo Weigh Bridge.

DESCRIPTION:

2 Acres prime land for development. Fully Serviced Plot

AMENITIES:

- Access to water, power and sewer connection.
- Close proximity to tarmac road

PRICES

Accepting Offers

PLOTS FOR SALE IN KOMA MACHAKOS COUNTY [PL074]

LOCATION:

The Property is in Koma area, Machakos County, touching recently tarmacked Kenol - Koma Road, off Kangundo road.

DESCRIPTION:

19 acres block of land subdivided into eighths totalling to 151 plots for both commercial and residential use.

AMENITIES:

- Controlled development.
- Steel gate with a guard house
- Fencing around property
- Graded roads.
- Power.
- Water.
- Ready Titles.

STATUS:

Ready for development.

PRICES

Residential 1/8 Acre for Ksh 1,500,000.00

Commercial 1/8 Acre for Ksh 2,000,000.00

PRIME PLOTS FOR SALE IN NAKURU INDUSTRIAL AREA [PL075]

LOCATION:

The property is in Nakuru Town Industrial Area on Harvester Road

DESCRIPTION:

Half acre plot.

The property consists of:

- Permanent office / Laboratory block
- 5 single rooms (permanent block)
- Two large temporary stores mode of iron sheet and timber.

Property suitable for Industrial warehouses or commercial development

AMENITIES:

- Perimeter wall
- Water
- Power
- Ready title deed

STATUS:

Ready for development.

PRICE

Ksh 59,000,000.00

FEBRUARY 2024

Thank You!



CO-OPERATIVE BANK
We are you

Visit our physical Property Hub today at KUSCCO Centre Ground Floor – Kilimanjaro Avenue, Upper Hill or our virtual hub www.goodhome.co.ke to view available properties.

Alternatively, call us on **0711 049 739, 0711 049 811 or 0711 049 266** or e-mail us at goodhome@co-opbank.co.ke to get more information on these properties as well as available financing options.

DISCLAIMER:

The Co-operative Bank of Kenya Limited, its directors, partners, employees and related entities responsible for preparing this property listing believe that the information carried therein is correct. However, no representation or warranties of any nature whatsoever are given, intended or implied, and as such, you should rely on your own enquiries to the accuracy of the information or material available from this listing.

Please note that information provided on this listing is general information and is subject to change without notice and should not be relied upon as a substitute for legal, financial, real estate or other expert advice. The Co-operative Bank of Kenya Limited disclaims all liability and responsibility including negligence for any direct and or indirect loss or damage suffered by any person or company arising out of any use of the listing or any information or material available from it.